

Dumpster and Trash Management

commercial properties • apartment complexes • businesses

Steps to Maintain Dumpsters



Require trash bags instead of placing loose trash in the dumpster



Secure lids while not in use to keep out rain and animals, as well as prevent wind damage



Place dumpsters on concrete and away from storm drains.



Do not place liquids or hazardous chemicals in the dumpster.



Use a broom to clean around the dumpster and keep it consistently clean



Inspect then replace dumpster when there are holes, rust, or damage.

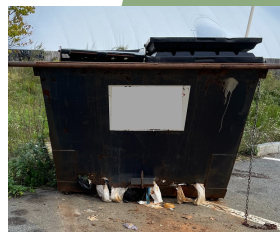
GOOD EXAMPLE

- Lid remains tightly **closed**
- **Clean** surrounding area and clean dumpster
- Place **on concrete**
- **No holes** in the dumpster, and lid is intact.



BAD EXAMPLE

- Open lid
- Contents spilling over the top
- Damage to the dumpster
- Debris and trash in surrounding area



REMINDER

Post signs and information around dumpsters and complexes so that community members have a clear understanding of good trash management

